

COLD CLIMATE HEAT PUMP

- Operates in cold climates
- Quiet yet powerful
- Economical to operate
- Simple to install



Cold Climate Hydronic heat pump, ideal for heating homes where overnight temperatures fall below freezing. Heating water for water-filled radiators or water filled pipes embedded in the concrete slab. (May require buffer tank – not included)

Similar models are available for swimming pool & spa heating, and commercial & industrial applications.

Also available in 3 Phase 415v

HEATING THE NATURAL WAY

A heat pump uniquely extracts solar heat energy found abundant in the in air and transfers it to water.

The mysterious heat pump. At first, our claims about this being a high efficiency solar system may seem outrageous, but really its quite simple - there is no magic, just science. Pushing minus 28°C refrigerant through a massive heat-exchanger, it's easy to absorb solar energy in the form of heat out the air. At an ambient air temp of only 10°C there is a 38°C temperature differential that we can harness. Because they don't rely on direct sunlight radiation, they can operate in all seasons of the year, under all conditions; shade, overcast, sun, rain, frost, even at night.

Comparison with Geothermal

Although a Geothermal system would seem to be more efficient, it will never save enough in energy or lower operating costs, when compared to the lifecycle costs of an air-sourced system. So for most of the Australian climate we would recommend the air-sourced systems.

With zoning control and even remote activation by telephone if required, used in conjunction with good building practices such as good insulation, hydronic heating with our state of the art, correctly sized heat pumps can be an economical and ecological solution to your home heating requirements.

..... "let us exceed your expectations"

Skyline Energy

SIMPLY THE BEST HYDRONIC HEAT PUMPS

Phone: 1300 552 976

www.skylineenergy.com.au

HOME CENTRAL HEATING WITH ADVANCED HEAT PUMP TECHNOLOGY

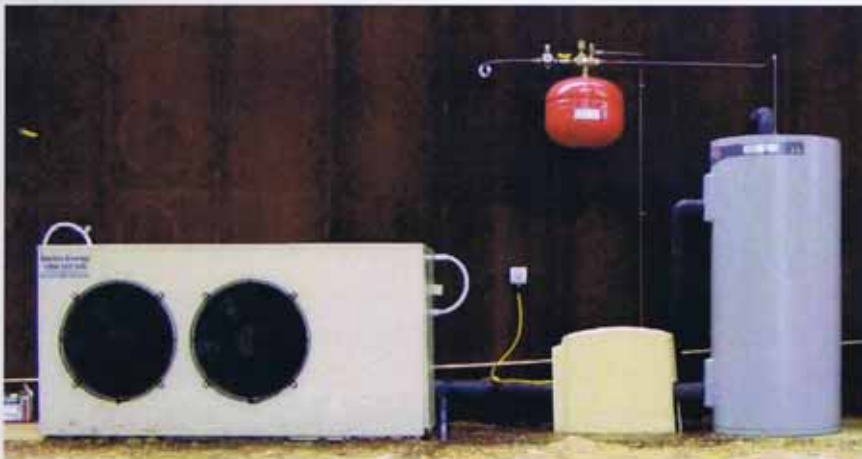
Concrete Floor Heating – with Heat Pumps

Concrete floor heating is rapidly becoming mainstream in Australia. The practise of embedding water pipes in the slab is well known and proven. However, the methods of heating the water are varied and there are several 'boiler' options.

With concern for the environment, the industry is experimenting with Solar, and heat-pump technologies including Geothermal, Water Sourced and Air Sourced.

With our "21st Century" air-sourced heat-pump Hydronic heaters, you will have a highly effective form of central heating with sensationally low running cost.

Air-sourced Hydronic heat-pumps are largely underrated, as they offer the best overall compromise between efficiency/operating costs, and lifecycle-costs. Air-sourced heat-pumps are fully self-contained and connected only to the Hydronic pipework. They have large fans to force high volumes of air over large single-pass Fin Coil Evaporators containing the very cold refrigerant, to absorb 'free' heat energy directly from the ambient air.



Green

The hydronic heat-pump building heater is environmentally friendly. Cooling the air by extracting the heat from it means that both you and the earth benefit

Hydronic Heat-Pump Building Heaters:



Our Heat-Pump Water Heaters are unlike any others, because:

They have sensationally low running costs

They keep your home warm all winter regardless of weather

They are very durable and robust

They are simple to install and operate, and are available in various sizes to cater for any home or commercial application.

Call us today 1300 552 976

COMMERCIAL SOLAR HOT WATER SYSTEM

Lower your overheads by installing air-sourced heat-pump water heaters, with massive solar rebates and reduce your water heating costs

Any small business:

- Dairy Farms
- Caravan Parks
- Motels
- Restaurants
- Manufacturing
- Hydronics

**MASSIVE
Solar Rebates**

Solar rebates can be claimed for almost any use, provided the system is designed, and installed under government guidelines. This can include Hydronic heating of buildings, potable hot water, and varied industrial and commercial applications.



- System pictured left is the basic 16kw + 800lt unit set up for hydronics home heating.
- Average recovery rate is 300 litres / hour
- Average coefficient of performance is 3.8
- Power input is 4.2kw, 3phase
- Systems are stackable and extra storage is no problem.
- Single phase systems are available.

If you need hot water – Call Skyline Energy.

We can design and supply a system for installation by you, or we can arrange full installation – it's not rocket science!

Call us today 1300 552 976

Model	SK15CC	SK20CC	SK25CC	SK25-3	SK30-3	SK38-3	SK50-3	SK60-3	SK3
Voltage / Phase	240v / Single Phase	240v / Single Phase	240v / Single Phase	415v 50Hz/ 3phase	415v 50Hz/ 3phase	415v 50Hz/ 3phase	415v 50Hz/ 3phase	415v 50Hz/ 3phase	415v 50Hz/ 3phase
Amps per phase (Amps)	20	25	30	13	16	20	25	30	25
Minimum Circuit Size (Amps)	30	40	40	25	20	25	40	40	40
Nom. output (Kw) @ 10°C ambient air	14kw@45°C water out	17kw@45°C water out	22kw@45°C water out	22kw@45°C water out	26kw@45°C water out	30kw@45°C water out	35kw@45°C water out	42kw@45°C water out	16kw@60°C water out
Nom. output (Kw) @ 10°C ambient air	12kw@60°C water out	15kw@60°C water out	20kw@60°C water out	20kw@60°C water out	24kw@60°C water out				4.4KW
Compressor Type (Copeland scroll)	3.8kw	4.4kw	5.5kw	5.5kw	6.6kw	8.3kw	11kw		
Inlet/outlet connections diameter (mm)	25mm copper	25mm copper	28mm copper	28mm copper	32mm copper	28mm copper	40mm copper	40mm copper	32mm copper
Flow Rate (Litres/second)	1	1.1	2.5	2.5	2.5	2.5	2.8	2.8	Recovery 300l/hr
Noise Level (dBA) @ 3 metres	59	59	59	59	62	62	69	69	61 @ 1 meter
Dimensions (mm)	1150L x 565W x 960H	1450L x 700W x 825H	1750L x 800W x 825H	1750L x 800W x 825H	1750L x 800W x 825H	1750L x 800W x 825H	1750L x 800W x 1015H	1750L x 800W x 1015H	1150L x 565W x 960H
Weight – empty (kg)	95	120	130	130	150	170	230	240	120
Defrost	Reverse Cycle	Reverse Cycle	Reverse Cycle	Reverse Cycle	Reverse Cycle	Reverse Cycle	Reverse Cycle	Reverse Cycle	Hot gas by pass
Cabinet	Powder coated alloy	Powder coated alloy	Powder coated alloy	Powder coated alloy	Powder coated alloy	Powder coated alloy	Powder coated alloy	Powder coated alloy	Powder coated steel
Refrigerant	R22	R22	R22	R22	R22	R22	R22	R22	R22
Storage	Optional	Optional	Optional	Optional	Optional	Optional	Optional	Optional	800lit Minimum
REC's Release	NA	NA	NA	NA	NA	NA	NA	NA	178 REC's Zone 4*

FOR MORE INFORMATION ON HYDRONIC HEAT PUMPS, PLEASE CALL

1300 552 976

www.skylineenergy.com.au

E: info@skylineenergy.com.au